

AN ISO 9001:2000 COMPANY

RACHNA METAL INDUSTRIES P. LTD.

Copper & Copper Base Alloys, Sheet, Strips, Busbar and Circles

Corp. Off: B-31, DSIDC, Patparganj Indl. Area, Delhi-110092 (India)
Ph.: +91-11-22157461-62-63-64-65-66-67-68 Fax : 22157451

Sales Off : 669, Churi Walan, Chawri Bazar, Delhi-110 006 India
Ph.: +91-11-23255040-41-42-43, 23284901, 23276689,
23273195, 2325711, 23263600, 23267955 Fax : 23284901

Works : 18/42, Site-IV, Industrial Area, Sahibabad,
Distt. Ghaziabad (U.P.), India
Ph.: +91-120-2895199, 2897679 Fax : +91-120-2897678

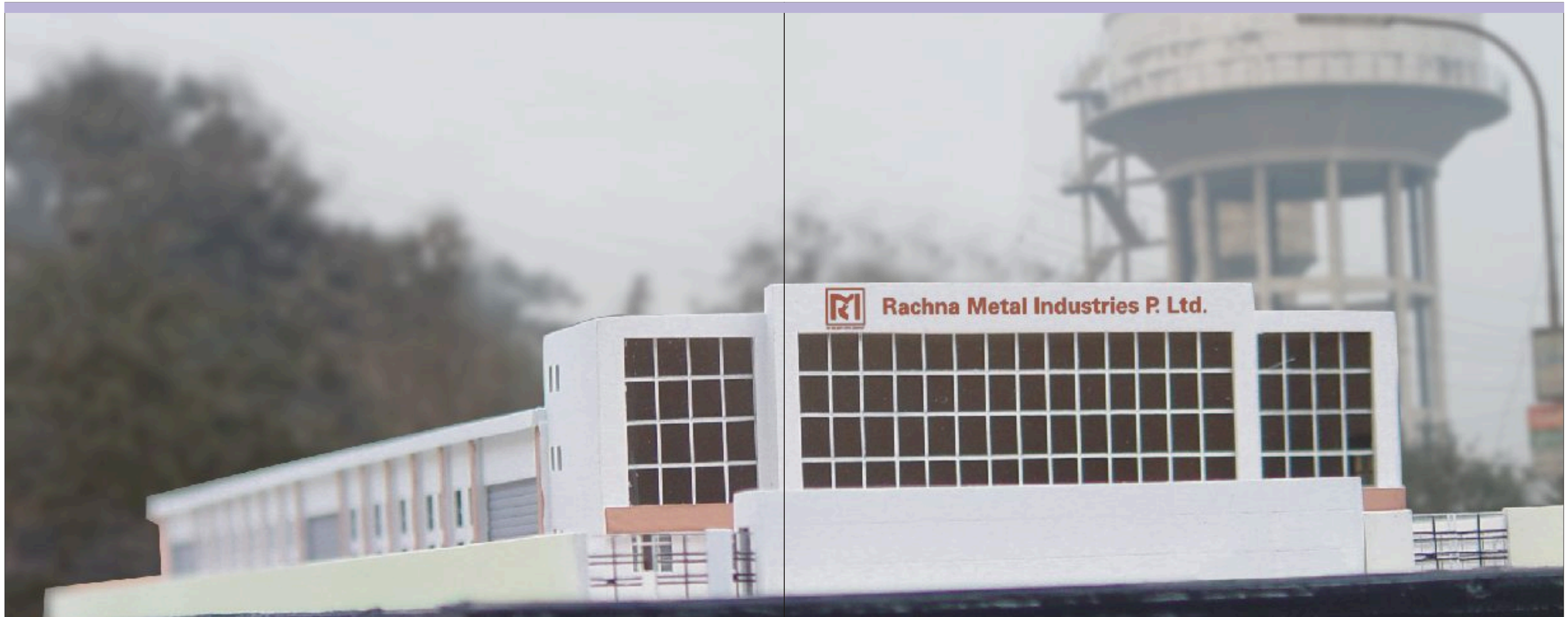
E-mail : copper@rachnametal.com ■ Website : www.rachnametal.com



AN ISO 9001:2000 COMPANY

RACHNA METAL INDUSTRIES P. LTD.

COPPER • COPPER BASED ALLOYS • SHEET • STRIPS • BUSBAR • CIRCLES



PROFILE



Rachna Metal Industries founded in 1978, is a leader in the field of metals and alloy products. Our capability and flexibility to meet unique product requirements and exact specifications has established us as a pioneer in our field. We are primarily involved in the manufacture of an extensive range of high quality strips, Busbars, Sheets and Circles in Copper based alloy products for a wide range of engineering industries.

Rachna Metal Industries has met the stringent Quality Management System Standard of The International Organization for Standardization (ISO) and has been certified an ISO 9001:2000 company. The public sector giant Bharat Heavy Electricals Limited has awarded us with Grade 'A'. Power Grid Corporation of India Limited has also awarded us third place for Transmission Line Mass Manufactured items.

We have sophisticated manufacturing facilities and a highly motivated team of qualified and experienced staff in production and sales to meet our customers' ever growing quality and service expectations. Our three decades of experience is testimony to our excellent customer service, products quality, commitment and competitive price structure.



OUR FACILITIES

MELTING & CASTING

- ◆ Induction Furnace 450 KW/ 1 TON
- ◆ Gas Fired Furnace 750 KG

UPCASTER

- ◆ 12 Line Rod Upcaster Unit 260 KW

HOT MACHINE

- ◆ Hot Rolling Mill (56" Barrel Dia.)
- ◆ Hot Furnace

ANNEALING FURNACE

- ◆ Gas Fired Billets Pre Heating Furnace
- ◆ Gas Fired Roller Furnace
- ◆ Vacuum Bright Pot Annealing Furnace Electrical

COLD ROLLING MILL (SHEETS & CIRCLE)

- ◆ 3 High Mill -56" (Barrel Dia.)
- ◆ 4 High Mill- 32" (Barrel Dia.)
- ◆ 4 High Mill- 22" (Barrel Dia.)
- ◆ 2 High Mill- 32" (Pinch Pass)

COLD ROLLING MILL (STRIP & BUSBAR)

- ◆ Strip Rolling Mill - 3

EXTRUSION

- ◆ Continuous Extrusion Plant For Twin Strips & Rod- (20mm² - 400mm²) i.e. max (40 x 10)
- ◆ Continuous Extrusion Plant For Strip & Rods- (100mm² - 2400mm²) i.e. max (120 x 20)

DRAW

- ◆ Draw bench - 2
- ◆ Pointing Machine - 1
- ◆ Bull Block - 2

STRAIGHTENING MILL FOR (SHEETS)

- ◆ Straightening Mill 18" (0.3mm To 1.5mm Thickness)
- ◆ Straightening Mill 50" (1.6mm To 5.0mm Thickness)
- ◆ Straightening Mill 50" (6mm To 16mm Thickness)
- ◆ Power Press (16mm To 100mm Thickness)

STRAIGHTENING MILL FOR STRIPS

- ◆ Straightening Mill - 2

ALLIED EQUIPMENTS

- ◆ Shearing Machines - 5
- ◆ Circle Cutting - 2
- ◆ Bandsaw - 2

WORKSHOP

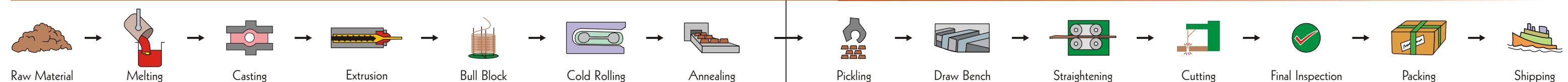
- ◆ Lathe, Milling, Drilling, Grinding, Welding

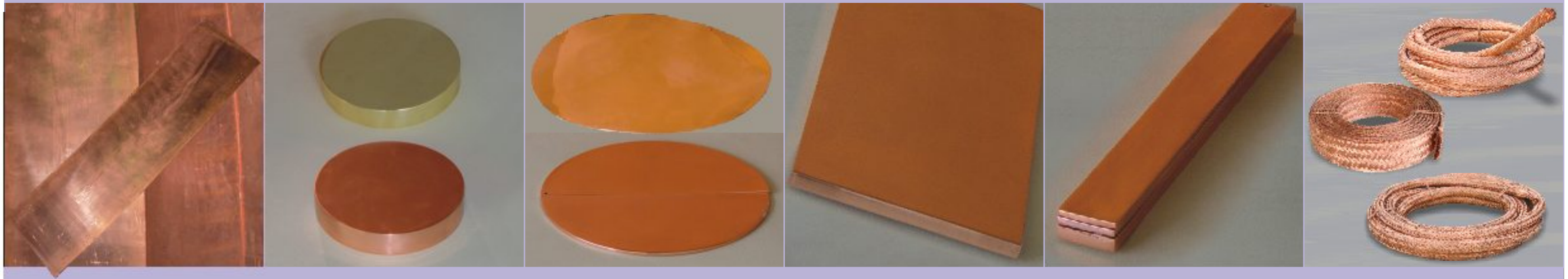
CAPTIVE POWER

- ◆ 800 KVA D.G SET
- ◆ 500 KVA D.G SET
- ◆ 125 KVA D.G SET

PROCESS

MANUFACTURING PROCESS FOR BUSBAR





SHEETS & CIRCLES

COPPER COLD ROLLED SHEETS

Standard Sizes	Thickness
1000mm x 2000mm	1.2mm to 16mm
1250mm x 1250mm	1.2mm to 25mm
1250mm x 2500mm	1.2mm to 12mm
14" x 48"	0.3mm to 25mm

Copper sheets also available in different sizes as per your requirement.

COPPER / BRASS HOT ROLLED PLATES

Sizes	Thickness
1000mm x 1000mm	30mm
900mm x 1000mm	40mm
750mm x 1000mm	50mm
400mm x 1000mm	75mm
330mm x 1000mm	100mm

COPPER / BRASS CIRCLES / TRAY CIRCLES (Cold Rolled)

Diameter	Thickness
3" (76.2mm) to 8" (203.2mm)	0.3mm to 25mm
8" (203.2mm) to 1300mm	1.2mm to 25mm
1350mm to 2500mm (In 2 pcs)	1.2mm to 12mm

Hardness (Soft, 1/4Hard 1/2Hard) as per your requirement.

COPPER / BRASS CIRCLES (Hot Rolled) & MACHINING

Diameter	Thickness
Q 1000mm	25mm
Q 750mm	45mm
Q 450mm	70mm
Q 325mm	100mm

We also make max OD / ID copper machining circle

Max OD (150mm to 1000mm)

ID Circle (50mm to 900mm)

GRADES

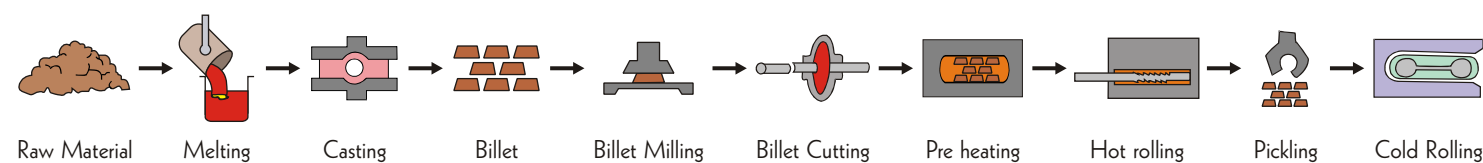
Oxygen Free High Conductivity Copper (OFHC)

Electrolytic Tough Pitch (ETP)

Phosphorus Deoxidized Copper (DHP)

Deoxidized Low Phosphorus (DLP)

MANUFACTURING PROCESS FOR SHEETS



STRIPS, FLATS & WIRES

COPPER FLATS & STRIPS

- ◆ Width - 6mm To 225mm
- ◆ Thickness - 0.5mm To 50mm
- ◆ Available In Straight Lengths / Coils

COPPER FLATS

- ◆ Width - 200mm To 500mm
- ◆ Thickness - 3mm To 30mm
- ◆ Available In Hacksaw Cut & Shearing Cut

COPPER BRADED STRIPS

- ◆ Width Thickness
- ◆ (10mm To 200mm) (1mm To 25mm)

COPPER TWISTED WIRE ROPE

- ◆ 2mm To 80mm Dia

COPPER BRADED WIRE ROPE

- ◆ 2mm To 80mm Dia

COPPER WIRES

- ◆ Outer diameter (0.2mm To 6mm)
- ◆ Available In Coils

COPPER PROFILES

Square Corner Round Corner Full Round

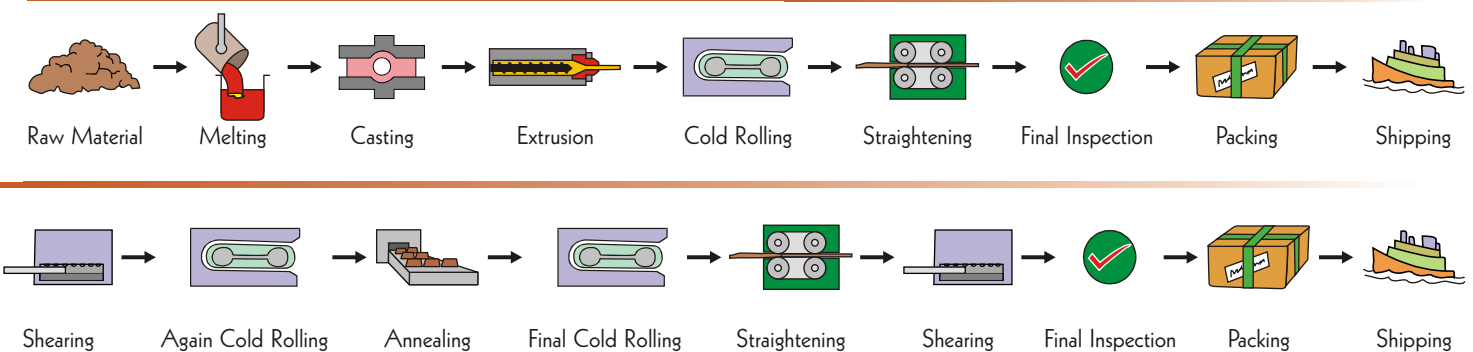


Available In All Shapes & Sizes As Per Customers Requirement

GRADES

- ◆ Oxygen Free High Conductivity Copper (OFHC)
- ◆ Electrolytic Tough Pitch Copper (ETP)
- ◆ And Various Other Grades

MANUFACTURING PROCESS FOR STRIPS





TUBES, PIPES & RODS

BRASS TUBE (Round)

- ◆ Outer Diameter (3mm To 100mm)
- ◆ Wall Thickness (0.2mm To 12mm depending on outer diameter of tubes)
- ◆ Available in straight lengths

COPPER TUBES (Round)

- ◆ Outer Diameter (3mm to 150mm)
- ◆ Wall Thickness (0.2mm to 16mm depending on outer diameter of tubes)

We also manufacture Fin Tubes

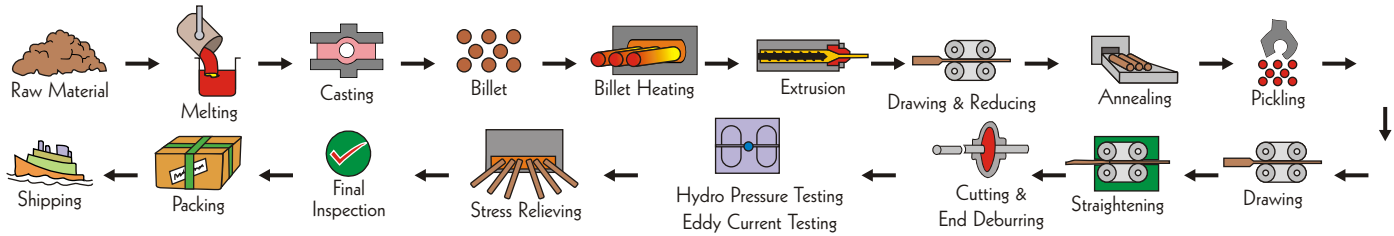
COPPER RODS (Round)

- ◆ Outer Diameter/Across flat (5mm To 150mm)
- ◆ Available In Straight Lengths/Coils

GRADES

- ◆ Oxygen Free High Conductivity Copper (OFHC)
- ◆ Electrolytic Tough Pitch Copper (ETP)
- ◆ Phosphorus Deoxidized Copper (DHP)
- ◆ Deoxidized Low Phosphorous (DLP)

PROCESS FOR TUBES



PACKING & SHIPMENT

PACKING

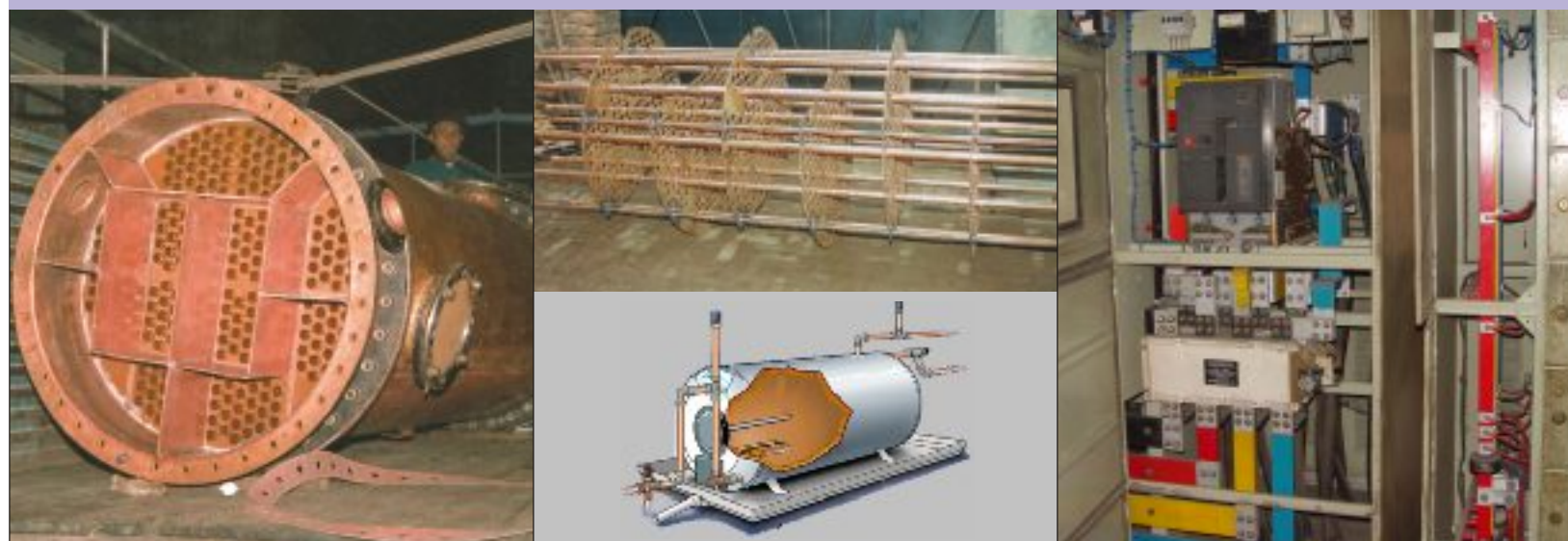
Sea Worthy Corrosion Protection For Shipments

- ◆ Wooden boxes with steel strapping
- ◆ Corrugated cardboard boxes with corner padding
- ◆ Wooden/steel traverse wound spools
- ◆ Coils wrapped in vci paper and palletized

SHIPPING

- ◆ Factory stuffed and sealed in 20' containers as per customers choice





APPLICATIONS

SHEETS & CIRCLES

- ☐ Heat Exchanger & Condensors
- ☐ Home Appliances
- ☐ Distillery Plant
- ☐ Sugar Industries
- ☐ Agriculture Plants
- ☐ Electrical Industry

FLATS STRIPS AND WIRES

- ☐ Automobiles and Railways
- ☐ Wide Range of Uses in Electrical Industry, e.g. Switchgear, Connectors
- ☐ Transformers and Circuit Breaker Terminals
- ☐ Electrical Holders and Clamps
- ☐ Defence Industry

TUBES

- ☐ Refrigeration & Airconditioning
- ☐ Petroleum & Chemical Industries
- ☐ Furniture & Decorative Industries
- ☐ Agriculture Industries
- ☐ Home Appliances

OUR TESTING FACILITIES

CHEMICAL ANALYSIS

- ☐ Spectrometer with oxygen Analyzer
- ☐ Electro Analyser

NON-DESTRUCTIVE TESTING

- ☐ Eddy Current Machine
- ☐ Hydraulic Test
- ☐ Pneumatic Test

PHYSICAL TESTING

- ☐ Universal Testing Machine
- ☐ Tensile Testing Machine
- ☐ Rockwell & Brinell Hardness Tester
- ☐ Vickers Hardness Tester
- ☐ Conductivity Meter

METALLURGICAL TESTING

- ☐ Metallographic Test (Polarized Light Attachment)